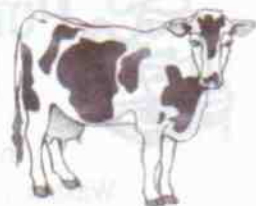




72<sup>nd</sup> Annual

# HOLSTEIN DAY



Saturday, July 31, 2010

Time 6:30 p.m.

An entry fee of 10% will be deducted from prize money. Entries must be forwarded to Dave Frisken 2424 Cty Rd. 11, RR#1 Selby, ON K0K 2Z0 OR Mark Wheeler RR#6 Napanee ON K7R 3L1 by **July 18, 2010**. Entries will not be accepted on the day of the show as the list of entries must be completed and mimeographed for distribution at the ring side at show time.

All entries confined to the county, or such other definite areas as may be decided by the committee, so money can be taken only in this area by any one breeder.

All exhibitors must become members of the Lennox Agricultural Society.

See Health Regulations for all cattle exhibited in Class A & B Fairs.

Cattle can be brought in as early as Thursday but must be in by 9:00 a.m. Saturday. Cattle must stay until 10:00 p.m. Saturday or prize money will be forfeited.

Special prizes offered for Holstein cattle will be found in the list of "Special Prizes" following regular classes.



# CATTLE

Ed Embury 613-378-2223, Brad Snider, Leonard Austin (Beef),  
Mark Wheeler 613-396-2731, Dave Frisken 613-388-2456 (Dairy)

### Regulations:

For the time of judging cattle consult judging program. (all cattle must be shown in the **Arena**).

In making entries, Exhibitors must give registered name and date of birth, sire and dam, of all animals shown.

Proof of Liability Insurance needed.

All senior animals date from September 1st each year. Registered pedigree must be produced to judges at the time of judging.

### Entry Fee:

An entry fee of 10% of prize money will be charged.

### Stall Fee:

Stall fee of \$12.00 per head will be charged for all cattle, including calves, and you must supply your own Straw. Maximum total eligible animals from a breeding unit is 10 head.

## CLOSED SHOW FOR ALL DAIRY BREEDS IN 2010

### SPECIALS - CALVES

The L. & A. Holstein Friesian Club will sponsor a calf class #3, #5, & #6 open to all 4-H calves, prize money to be divided pro rata: half regular prize money.

Boy or girl under 10 years showing Holstein calf, purebred or grade, with dairy characteristics, from registered holstein sire: \$5.00 for each exhibitor. Calf **MUST** have been born December 2009 or January or February 2010.

**Special:** First Place Dairy Heifer (6 months or under) PRIZE WILL BE GIVEN.



# HOLSTEIN CATTLE PRIZE LIST



Sunday, August 1, 2010  
FOR THE FOLLOWING CLASSES

CLASS 1	PRE 4H	BORN 1 <sup>ST</sup> MARCH 2010 - 31 <sup>ST</sup> MAY 2010
CLASS 2	JUNIOR CALF	BORN 1 <sup>ST</sup> DECEMBER 2009 - 28 <sup>TH</sup> FEBRUARY 2010
CLASS 3	INTERMEDIATE CALF	BORN 1 <sup>ST</sup> SEPTEMBER 2009 - 30 <sup>TH</sup> NOVEMBER 2009
CLASS 4	SENIOR CALF	BORN 1 <sup>ST</sup> JUNE 2009 - 31 <sup>ST</sup> AUGUST 2009
CLASS 5	SUMMER YEARLING	BORN 1 <sup>ST</sup> MARCH 2009 - 31 <sup>ST</sup> MAY 2009
CLASS 6	JUNIOR YEARLING	BORN 1 <sup>ST</sup> DECEMBER 2008 - 28 <sup>TH</sup> FEBRUARY 2009
CLASS 7	INTERMEDIATE YEARLING	BORN 1 <sup>ST</sup> SEPTEMBER 2008 - 30 <sup>TH</sup> NOVEMBER 2008
CLASS 8	SENIOR YEARLING	
CLASS 9	JUNIOR CHAMPION	
CLASS 10	TOP L.P.I. HEIFER	
CLASS 11	JUNIOR BREEDERS HERD	3 ANIMALS BRED & OWNED BY EXHIBITOR
CLASS 12	FEMALE JUNIOR 2 YR OLD	BORN 1 <sup>ST</sup> MARCH 2008 - 31 <sup>ST</sup> AUGUST 2008
CLASS 13	FEMALE SENIOR 2 YR OLD	BORN 1 <sup>ST</sup> SEPTEMBER 2007 - FEBRUARY 2008
CLASS 14	FEMALE JUNIOR 3 YR OLD	BORN 1 <sup>ST</sup> MARCH 2007 - 31 <sup>ST</sup> AUGUST 2007
CLASS 15	FEMALE SENIOR 3 YR OLD	BORN 1 <sup>ST</sup> SEPTEMBER 2006 - 28 <sup>TH</sup> FEBRUARY 2007
CLASS 16	FEMALE 4 YRS OLD	BORN 1 <sup>ST</sup> SEPTEMBER 2005 - 31 <sup>ST</sup> AUGUST 2006
CLASS 17	FEMALE 5 YRS OLD	BORN 1 <sup>ST</sup> SEPTEMBER 2004 - 31 <sup>ST</sup> AUGUST 2005
CLASS 18	FEMALE MATURE COW	BORN PRIOR TO 1 <sup>ST</sup> SEPTEMBER 2004
CLASS 19	GRAND CHAMPION	
CLASS 20	BREEDERS HERD	3 ANIMALS BRED & OWNED BY EXHIBITOR
CLASS 21	HIGHEST COMPOSITE B.C.A. COW	
	PREMIER BREEDER AND PREMIER EXHIBITOR	

## TROPHY SPONSORS - HOLSTEIN CATTLE

PRE-4H	PRE-4H TROPHY	PRESENTED BY POPLAR DELL
JUNIOR CHAMPION	WILLOWS TROPHY	PRESENTED BY WILLOWS AGRISERVICES
RES JUNIOR CHAMPION	GERALD G. HUNT TROPHY	PRESENTED BY FAMILY OF GERALD G. HUNT
JUNIOR BREEDERS HERD	SELECTY SIRES CANADA	
TOP L.P.I. HEIFER	JOHN SONNEVELD TROPHY	PRESENTED BY PYNACKER FARMS
JUNIOR 2 YRS OLD	BASIL KELLY TROPHY	PRESENTED BY BASIL KELLY
SENIOR 2 YRS OLD	COUNTRY DEPOT TROPHY	PRESENTED BY COUNTRY DEPOT NAPANEE
JUNIOR 3 YRS OLD	BROWNLANDS TROPHY	PRESENTED BY ALAN & JANE BROWN & FAMILY
SENIOR 3 YRS OLD	MURRAY JACK TROPHY	PRESENTED BY MURRAY & STEVEN JACKSON
FEMALE 4 YRS OLD	GENTILITY TROPHY	PRESENTED BY KEVIN & ADAM BALDWIN
FEMALE 5 YRS OLD	DON AYLSWORTH TROPHY	PRESENTED BY DON AYLSWORTH
FEMALE MATURE COW	O'NEILLS FARM SUPPLY TROPHY	PRESENTED BY TERRY & SANDRA O'NEILL
GRAND CHAMPION	PAUL HUNT MEMORIAL TROPHY	PRESENTED BY THE HUNT FAMILY
RES GRAND CHAMPION	SELBYVALE TROPHY	PRESENTED BY THE ROBINSON FAMILY
PRODGENY OF DAM	PYNACKER TROPHY	PRESENTED BY PYNACKER HOLSTEINS
BREEDERS HERD	HOME HARDWARE TROPHY	PRESENTED BY NAPANEE HOME HARDWARE BUILDING CENTRE
PREMIER BREEDER	FOUNDATION SIRES	PRESENTED BY DON AYLSWORTH
PREMIER EXHIBITOR	GEORGE HARKER MEMORIAL TROPHY	PRESENTED BY THE HARKER FAMILY
HIGHEST COMPOSITE B.C.A. COW	EASTERN OVERHEAD DOORS TROPHY	PRESENTED BY ERNIE & LORIE WALES



## CLASS 8 - BEEF CATTLE SHOW

**Committee Members:**

Edward Embury 613-378-2223      Leonard Austin 613-388-1105  
 Brad Snider

**Barn Superintendent:**

Brad Snider

Class 8A Herefords

Class 8B Maine Anjou

Class 8C Simmental

Class 8D Limousine

Maine Anjou, Hereford & Simmental - Judged Sunday, August 1, 2010 at 4:00 p.m. All animals MUST be on the grounds by 10:00 a.m. Sunday, August 1, 2010

**Prize Schedule:**

1<sup>st</sup> \$40.00      2<sup>nd</sup> \$30.00      3<sup>rd</sup> \$25.00      4<sup>th</sup> \$20.00      5<sup>th</sup> \$15.00      6<sup>th</sup> \$10.00      7<sup>th</sup> \$5.00      8<sup>th</sup> \$5.00

**1. Definitions**

**RULES Governing Beef Cattle**

- (a) For the purposes of the Classifications and exhibit shall be interpreted as follows: All purebred registered animals, whether owned by one person or more than one person (individually or jointly) are considered to be the production of the farm or breeding unit on which they are maintained. Purebred means registered or eligible for registration as purebred in the Canadian Hand Book.
- (b) For the purposes of Classifications a "Breeding Unit" is defined as follows:  
 In each classification where the same or common interests are involved in more than one breeding operation such operations are considered as one Breeding unit. In all cases where there is any doubt that more than one breeding unit exists, the interpretation shall be that only one breeding unit exists. The responsibility of proof of separation of breeding units shall rest with the exhibitor(s).
- (c) Each breeding unit is allowed 10 exhibits, excluding breeders herd.
- (d) All entries must be owned by and registered in the name of the exhibitor. Note: Exception is get of sire and breeders herd.
- (e) Exhibitor to report to Barn Superintendent prior to unloading regarding stall locations.

**Entry Fee:** An entry fee of 10% of prize money will be charged.

**Stall Fee:** A stall fee of \$12.00 per head will be charged for all cattle, including calves, must supply your own straw.

**Note:** Cattle must remain in barns until 6:00 p.m. Sunday, August 1, 2010 or forfeit any prize money.



## ENTRY DEADLINE

**Entry Deadline: July 19, 2010 (Late ones a further 10%)**

Mail to: 170 York Street, Napanee, Ontario K7R 3N8

**Bull Sections:**

- Section 1: BULL CALF, born on or after January 1, 2010, minimum of three months of age on day of judging
- Section 2A: BULL YEARLING, born April 1, 2009 to December 31, 2009
- Section 2: BULL YEARLING, born January 1, 2009 to March 31, 2009
- Section 3: BULL - 2 years old - born before January 1, 2009
- Section 4: GRAND CHAMPION BULL and RESERVE GRAND CHAMPION (rosettes)

**Female Sections:**

- Section 5: FEMALE CALF, born on or before January 1, 2010 minimum of three months of age on day of judging
- Section 6: FEMALE HEIFER, born April 1, 2009 to December 31, 2009
- Section 7: FEMALE HEIFER, born January 1, 2009 to March 31, 2009
- Section 8: FEMALE, born January 1, 2008 to December 31, 2008 with her own 2009 natural purebred, tattooed, calf at foot. Female and calf to be shown as a unit except that the calf is eligible to be shown as a single animal in Section 11.
- Section 9: FEMALE, born prior to January 1, 2008 with her own 2010 natural, purebred, tattooed calf at foot. Female And calf to be shown as a unit except that the calf is eligible to be shown as a single animal in Section 11.
- Section 10: GRAND CHAMPION FEMALE & RESERVE GRAND CHAMPION (rosettes)
- Section 11: Breeder's Herd - group of 4 animals bred by the exhibitor both sexes represented and be exhibited in Previous classes. At least one animal must be owned by the exhibitor. Limited to one exhibit per exhibitor.

**Specials:**

- 1. Supreme Champion Female in Beef Breeds - sponsored by Country Depot
- 2. Supreme Champion Male in Beef Breeds - sponsored by Harvest Hill Farms